

| COMPANY PROFILE

International player
in large infrastructure



ASTM GROUP

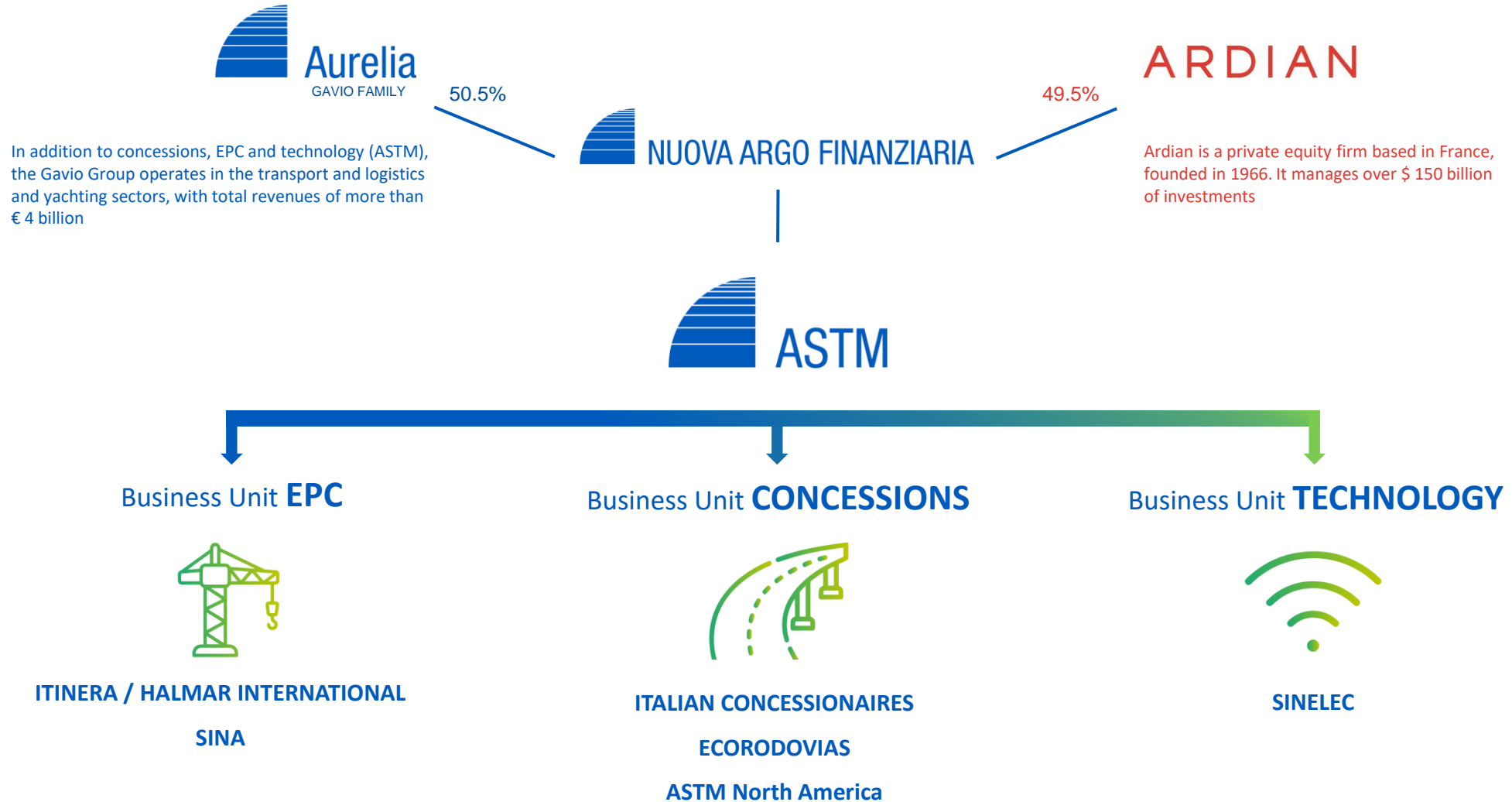
The ASTM Group is an international company operating in the sectors of **motorway network management** under concession, design and construction of **large infrastructure projects** and **technology** applied to mobility.

In the concessions sector, the Group is **the second largest motorway operator** in the world with a network of around **6,200 km**.

ASTM wants to be a key player in the **digital and ecological mobility transformation** to build the infrastructure of tomorrow: innovative, resilient and sustainable.

**We connect ideas, people and goods
enabling growth and guaranteeing safety and
quality to our stakeholders**





Key numbers



1st

Private Italian
motorway operator



6,200 km

Motorway network
managed



3.4 bn

Revenues
in €



17,000+

Employees and
collaborators



2nd

Largest toll road
operator in the world



**15+
countries**

Local operations in
the world



1.3 bn

EBITDA pro forma
in €



9 SDGs

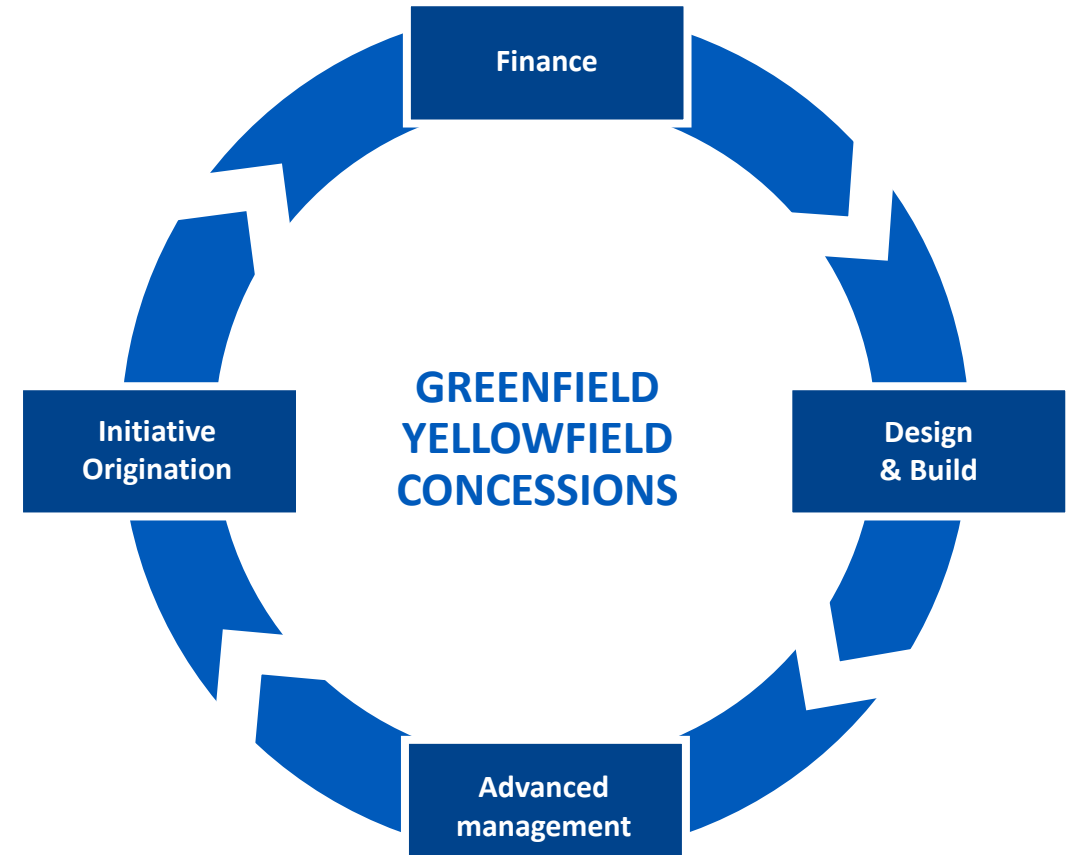
For sustainable
development

«One company» business model

ASTM covers the entire **value chain** in the infrastructure sector, with capabilities in:

- Initiative origination
- Finance
- Design & Build
- Advanced management

A "One company" business model that, through integrated management of its operations, focuses on maximum infrastructure safety and service quality, providing effective risk management to supports sustainable growth



The strategic vision of sustainability

ASTM's Sustainability Plan is based on three pillars:



People

- Promotion of diversity and inclusion
- Human capital development
- Health and safety protection
- Protection of human rights



Planet

- Reduction of CO2 emissions
- Protection of biodiversity
- Development of circular economy projects



Prosperity

- Support to technological innovation
- Contribution to the development of local areas and communities
- Road safety

Sustainability: connected to tomorrow

ASTM incorporates **sustainability** into its strategy and daily business, drawing inspiration from the «Ten Principles» of the United Nations Global Compact and the ISO 26000:2010 guidelines.

- The Group confirms its commitment to be at the forefront of energy transition and fight against climate change by setting **greenhouse gas emissions reduction targets on a scientific basis**. ASTM is the first European highway operator to set targets approved by The Science Based Targets initiative (SBTi):
 - **-54% Scope 1 and Scope 2** GHG emissions by 2030 (baseline 2020)
 - **-11% Scope 3** GHG emissions for goods and services purchased from third parties by 2023 (baseline 2021)

Being sustainable means creating value over time, a shared value with all the Group's stakeholders



Business Unit CONCESSIONS

The ASTM Group is the **world's second largest private player** in the **construction and management of motorway infrastructure**, with a network of around **6,200 km in Italy, Brazil and the UK**.



around **1,400 km**

13 Concessions

ASTM is the main private motorway operator in the Country. Its network is located in the Northwest, and it represents more than 20 percent of the national network



around **4,700 km**

11 Concessions

In Brazil, ASTM Group, through EcoRodovias, a company listed on the São Paulo Stock Exchange, is the country's leading highway operator



around **80 km**

1 Concession

Newcastle-Carlisle (A69), is a main roadway in the northern part of the United Kingdom, jointly controlled with RoadLink Holding



13 stations
New York Underground

1 Concession

Through ASTM North America, the Group operates vertical transportation systems (American Disability Act) at 13 stations in the NY subway system

ASTM Group is the **leading private motorway operator in Italy** with over 1,400 km of network, located in the north-west of the country.

The Group's motorway network runs along the main European infrastructure corridors and along the **strategic routes** identified by the European Community for the development of passenger and freight traffic.

Major infrastructure works are a key asset for the country system, and the ASTM Group, aware of its role, promotes **digitalization projects** of its highway network that focus on travel experience, environment and territorial growth.

**1st**Private Italian
highway operator**1,400 km**Motorway network
in Italy



	CONCESSIONAIRE	STRETCH	KM
SUBSIDIARY LICENSES	SATAP	A4: Turin-Milan	130
		A21: Turin-Piacenza	168
	SALT	A12: Sestri Levante-Livorno-Viareggio-Lucca-Fornola-La Spezia	155
		A15: La Spezia-Parma	182 *
	SAV	A5: Quincinetto-Aosta	60
	AUTOSTRADA DEI FIORI	A10: Savona-Ventimiglia	113
		A6: Turin-Savona	131
	ASTI-CUNEO	A33: Asti-Cuneo	70
	AUTOVIA PADANA	A21: Piacenza-Brescia	112
	SITAF	A32-T4: Frejus Tunnel - Turin - Bardonecchia	94
ASSOCIATED COMPANIES	ATIVA	A4-A5: Turin Ring Road - Turin-Quincinetto - Ivrea-Santhià - Turin-Pinerolo	156
	TE	A58: Milan External Ring Road	32
	SITRASB	T2: Gran San Bernardo Tunnel	13
TOTAL			1,416

* Including the Parma-Nogarole Rocca section (81 km under construction)

The Group network connects major cities in the northwest of the country, Milan, Genoa and Turin, crossing the regions of Piedmont, Valle d'Aosta, Lombardy, Liguria and Tuscany

ASTM operates in Brazil through **EcoRodovias Infraestrutura e Logística SA**, the country's leading highway operator listed on the São Paulo Stock Exchange.



1st

Operator in the country



4,700 km

Motorway network in Brazil



11

Motorway concessions



350 mn

Paying vehicles by year



3.45 bn

Revenues in R\$



4,800

Employees



EcoRodovias' portfolio includes **11 motorway concessions** and **one port (EcoPorto)**, located in eight different states in Brazil. The structures are located in the main trade corridors in the southern and south-eastern regions of the country.

CONCESSIONAIRE	STRETCH	KM
ECOPONTE	Rio de Janeiro - Niterói (State of Rio de Janeiro)	25
ECO101	Macuri/Ba - Rio de Janeiro border	476
ECOVIAS DOS IMIGRANTES	San Paolo - Porto Santos	177
ECOSUL	Pelotas - Porto Alegre - Porto Rio Grande	457
ECOPISTAS	San Paolo - Vale do Rio Paraiba	144
ECO135	Montes Claros (Minas Gerais)	364
ECO050	Cristalina (Goiás) - Delta (Minas Gerais)	437
ECOVIAS DO CERRADO	Jatai (Goiás) - Uberlandia (Minas Gerais)	437
ECOVIAS DO ARAGUAIA	Alianca do Tocantins (To) - Anapolis (Go)	851
ECORIOMINAS	Sistema autostradale Rio de Janeiro (RJ) - Governador Valadares (MG)	727
ECONOROESTE	São José do Rio Preto, Araraquara, São Carlos e Barretos	601
TOTAL		4,696






ASTM North America is the company through which the ASTM Group promotes and develops public-private partnership (**P3**) concession projects in the **United States**.

The **company** was awarded in 2023 the tender promoted by the **New York Metropolitan Transportation Authority Construction & Development Company** for improving the accessibility of **13 New York City subway stations** and the subsequent operation and maintenance of the vertical transportation systems, for the **25 years** of the concession.

This P3 project is part of a larger plan promoted by the **MTA** to bring New York City subway stations into compliance with **the Americans with Disabilities Act (ADA)** and was awarded "Best Transit Project" in the 2023 edition of the P3 Awards.



Business Unit EPC





In the **EPC** (Engineering, Procurement and Construction) sector, the Group operates through **ITINERA**, one of the leading Italian companies in the sector in terms of size, revenue and order book.

Itinera operates in the following **business areas**:

- Roads and motorways
- Railways and subways
- Airports
- Hospitals
- Civil and commercial construction
- Motorway maintenance

Major infrastructure and civil construction works that support the lives of millions of people





1,406 mln

Turnover
in €



5.6 bn

Backlog
in €



1,000+ km

Roads and railways
built



100+ km

Tunnels
built



**15+
countries**

Worldwide presence



5,400

Employees and
collaborators





In the United States, the Group operates through **Halmar International**, an Itinera subsidiary, one of the leading construction companies in the Northeast area, which has a significant track record of completed projects in the transportation infrastructure sector over more than 60 years.



1.5 bn
Backlog
in €



60+
Years of activity

**Leader in the realisation
of Design & Build projects**





Sina is the ASTM Group's engineering company focused on the design, management and upgrade of structures.

- Design and realization of works
- Asset management
- Diagnostics: monitoring and maintenance of the infrastructures
- Road safety



1,000+
Projects realized



300+
Employees

**SINA is among the top 5
engineering companies in Italy**



Business Unit TECHNOLOGY AND INNOVATION





Sinelec brings together the technological and hi-tech systems expertise of the ASTM Group applied to the infrastructure world:

- Develops advanced **technological systems** for **Electronic Toll Collection (ETC)** and **Intelligent Transportation Systems (ITS)**, helping road operators to meet the future challenges of more sustainable and connected mobility
- Takes care of **technologically advanced systems** for infrastructure, hospitals, civil and commercial construction, ports and airports
- Provides **ICT services** and **information systems** to the Group

Sinelec is an end-to-end player, with an integrated, broad offering driven by the power of innovation





900

Toll gates



15

Traffic control centers



1,5 mln

Transits managed per day



30+ mn kg

Air ducts installed in the last 2 years



2000+

Electric panels installed in the last 2 years



1000+ km

Networks installed in the last 2 years



24/7/365

Maintenance



600 +

Employees and collaborators



#movingtothefuture