



COMPANY PRESENTATION

2022

ASTM GROUP

GLOBAL PLAYER IN PLANNING, CONSTRUCTING AND MANAGING INFRASTRUCTURE NETWORKS



SINELEC

TECHNOLOGY COMPANY OF ASTM GROUP



SINELEC gathers together the technological expertise of the Group in the fields of Electronic Toll Collection (ETC) and Intelligent Transportation Systems (ITS)

With 20+ years of experience in developing, deploying and maintaining advanced technology solutions for the highway sector, today SINELEC is leading the way towards the SMART ROADS of the future.

WHO WE ARE

AT A GLANCE

Sinelec is an end-to-end technology player that provides complete leading-edge solutions to support interconnected roadways, bridges and tunnels


Company

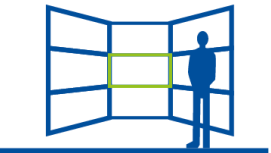
 Solutions for mobility and transportation infrastructure





 300+ direct employees


Key facts


 900 toll gates


 14 operational control centers

 3B € processed per year

 1,5M transits managed per day

 3000+ CCTV cameras

 2.000 km fiber optic WAN

 24/7/365 maintenance service

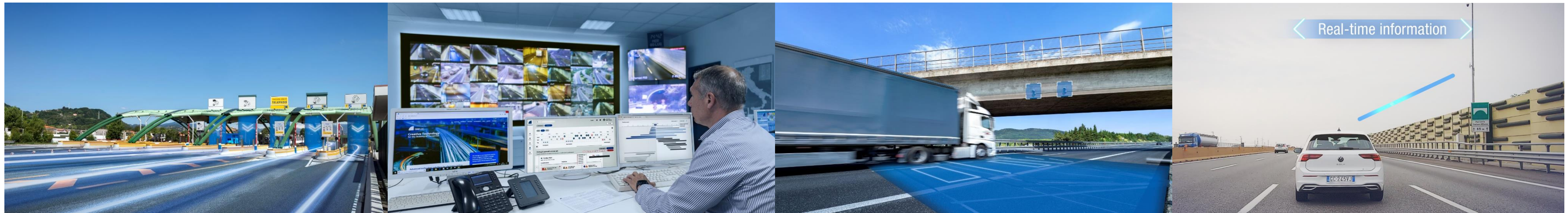
WHAT WE DO

TECHNOLOGY LEADER

- Technology advisory services
- Products and solutions
- System integration
- Operation and maintenance

PORTFOLIO

OUR SOLUTIONS

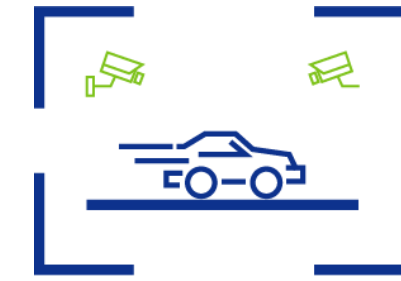
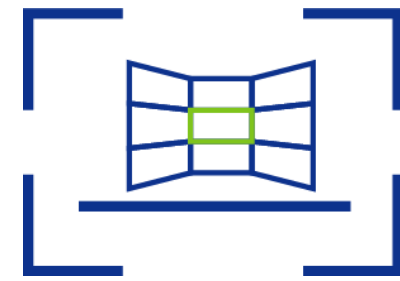


tolling & access management

operations & traffic management

safety & security

connected mobility



- Toll gates (manual, self-service, electronic, mixed)
- Multi-lane free-flow
- Vehicle identification/classification solutions
- Operational and commercial back-office systems
- Access automation (smart parking, logistic sites)

- Advanced Traffic Management System ATMS

- Weigh-In-Motion
- Tunnel safety systems
- IoT monitoring
- Enforcement solutions (speed-limit)
- Advanced video analytics for AID and traffic"

- Wi-fi in motion service network
- C-ITS platform – V2I ready
- Broadband network solutions

CERTIFICATIONS

EXPERIENCED AND CERTIFIED CROSS-TECHNOLOGY PLAYER IN PUBLIC AND PRIVATE WORKS

The choice of creating sustainable solutions, guaranteeing workplace safety and protecting information security, is recognized by the certification of our integrated management system:

QUALITY	UNI EN ISO 9001: 2015
ENVIRONMENTAL	UNI EN ISO 14001: 2015
SAFETY	UNI EN ISO 45001: 2018
INFORMATION SECURITY	UNI CEI EN ISO / IEC 27001: 2017
ANTI-BRIBERY	UNI EN ISO 37001: 2016
ROAD SAFETY	UNI EN ISO 39001: 2016

CERTIFIED MANAGEMENT SYSTEMS



UNI EN ISO **9001:2015**
 UNI EN ISO **14001:2015**
 UNI ISO **45001:2018**
 UNI CEI EN ISO/IEC **27001:2017**
 UNI ISO **37001:2016**
 UNI ISO **39001:2016**

SOA qualified



CERTIQUALITY IS MEMBER OF CISQ FEDERATION



R&D

OPEN INNOVATION PARADIGM



WHY SINELEC

DISCOVER OUR PLUS



Proven strong expertise in helping customers to build, test and implement reliable technology platforms in complex multidisciplinary projects

ONE STOP SHOP EXPERIENCE

With a wide portfolio and extended technological capabilities, we guarantee an end-to-end approach

TAILORED SOLUTIONS

We can adapt our solutions to customer requirements, best fitting his business model

TECHNOLOGICAL AGNOSTIC

Our solutions are completely open to integrate different ITS hardware platforms (e.g. TVCC, VMS, SOS, Automatic Incident Detection,...)



Thank you.

Headquarters

SINELEC S.p.A.

Località Passalacqua, 2/2
15057 Tortona (AL)
ITALY
Tel +39 0131 8791

info@sinelec.it
www.sinelec.it

SINELEC USA Inc.

421 East Route 59
Nanuet, NY 10954
USA
Tel. +1 845 627 5442

info@sinelec.it
www.sinelec.it

SINELEC S.p.A. - Abu Dhabi

Al Hamed Tower, 2° Floor
Muroor Road – Al Falah Plaza
P.O. Box 34869, Abu Dhabi, UAE
Tel. +971 2 626 7566

info@sinelecuae.com
www.sinelecuae.com